

Replacing LCD Inverter on a Dell Inspiron 8600 to fix the backlight problem

This is not hard to do at all, \$40 and 20mins of work might save you quite a lot of money. Don't be afraid to pull the frame, it can't get worse than not having it fix. Pull out the battery if you want to but I didn't ☺ so that's why you see me disconnect the power panel connector below. All you need is a good sets of little screw driver from Walmart. *You will need a good and solid quality philips head mini screw driver for the 2 screw on the inverter. I had hard time on them because mines are too cheap and old. Alright, let's start!



I bought this for \$37 on ebay including shipping.



Start from the left, dig it out!



Carefully...



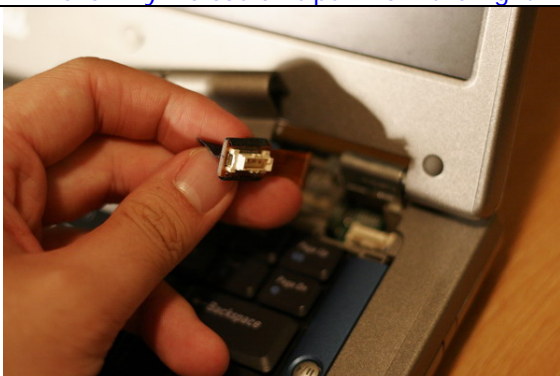
And carefully...



This is why we couldn't pull from the right.



Grab the little tape and pull out this plug.



No need to do this if you took out the battery.



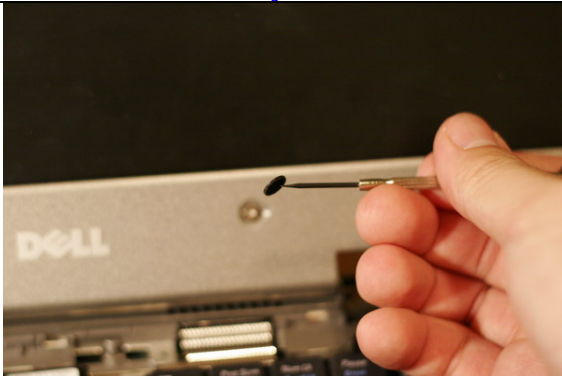
Dig out this 6 of these rubber cover



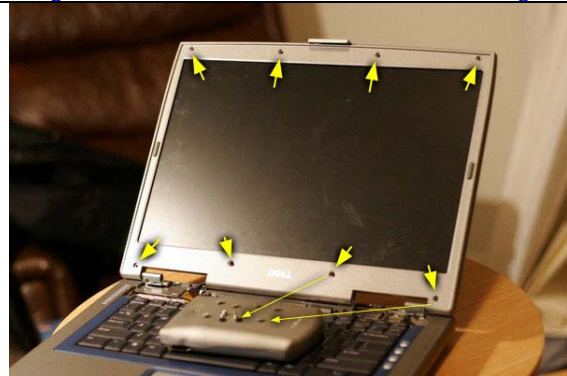
Reveal yourself !



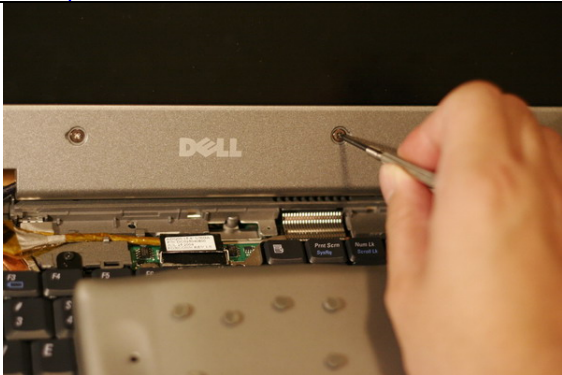
Dig out the other 2 covers next to dell logo.



Keep them clean coz we'll need them back.



So a total 6 rubbers & 2 plates got pull out ok?



Loosen these 2

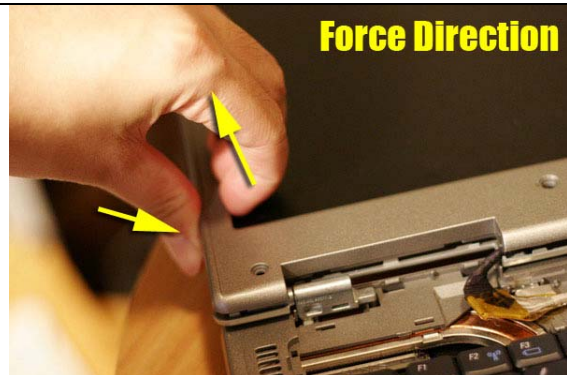


Loosen the other 6



Force Direction

Pull it like this, and lift up together.



Force Direction

Do this all around



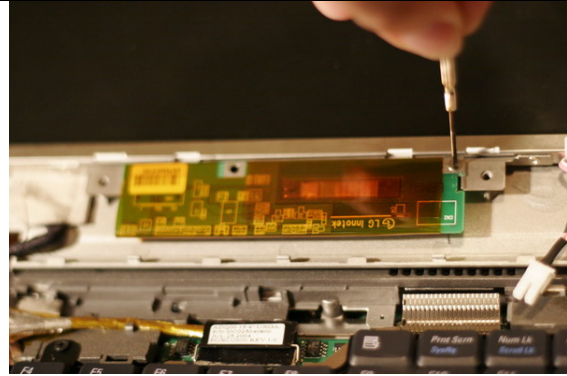
Done!



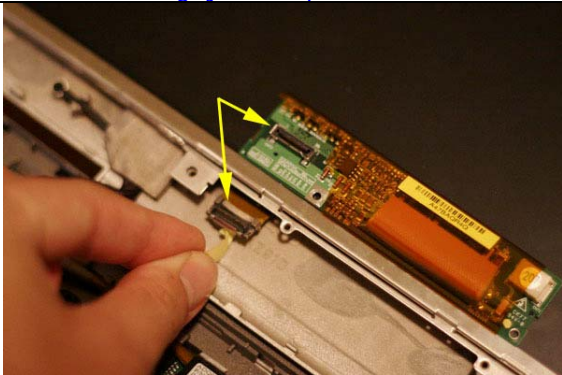
Blow away the nasty dust and potato chips.



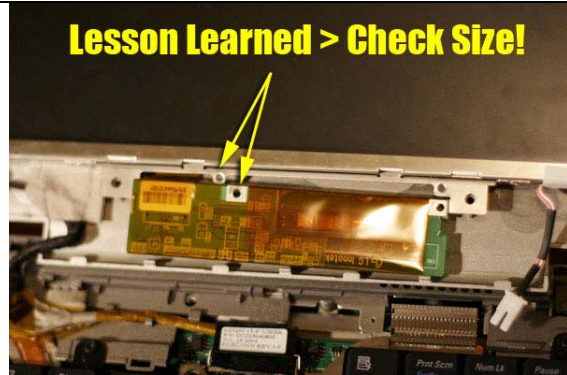
Pull out this guy, don't pull from the cable!



Loosen both screws



Pull the little tape and disconnect this guy as well.



Lesson Learned > Check Size!
There are 2 different screen sizes for 8600, I messed up here. This will still work using the right screw alone. Just don't make the same mistake.



Let's give it a try!



Working? Reverse the steps to put things back.



Nightmare is over!! Pass on the knowledge.
By Krazykwok

>> Donation in any amount for Web Hosting/ Beer\$ is very welcome © <<

money167 AT gmail DOT com

OR